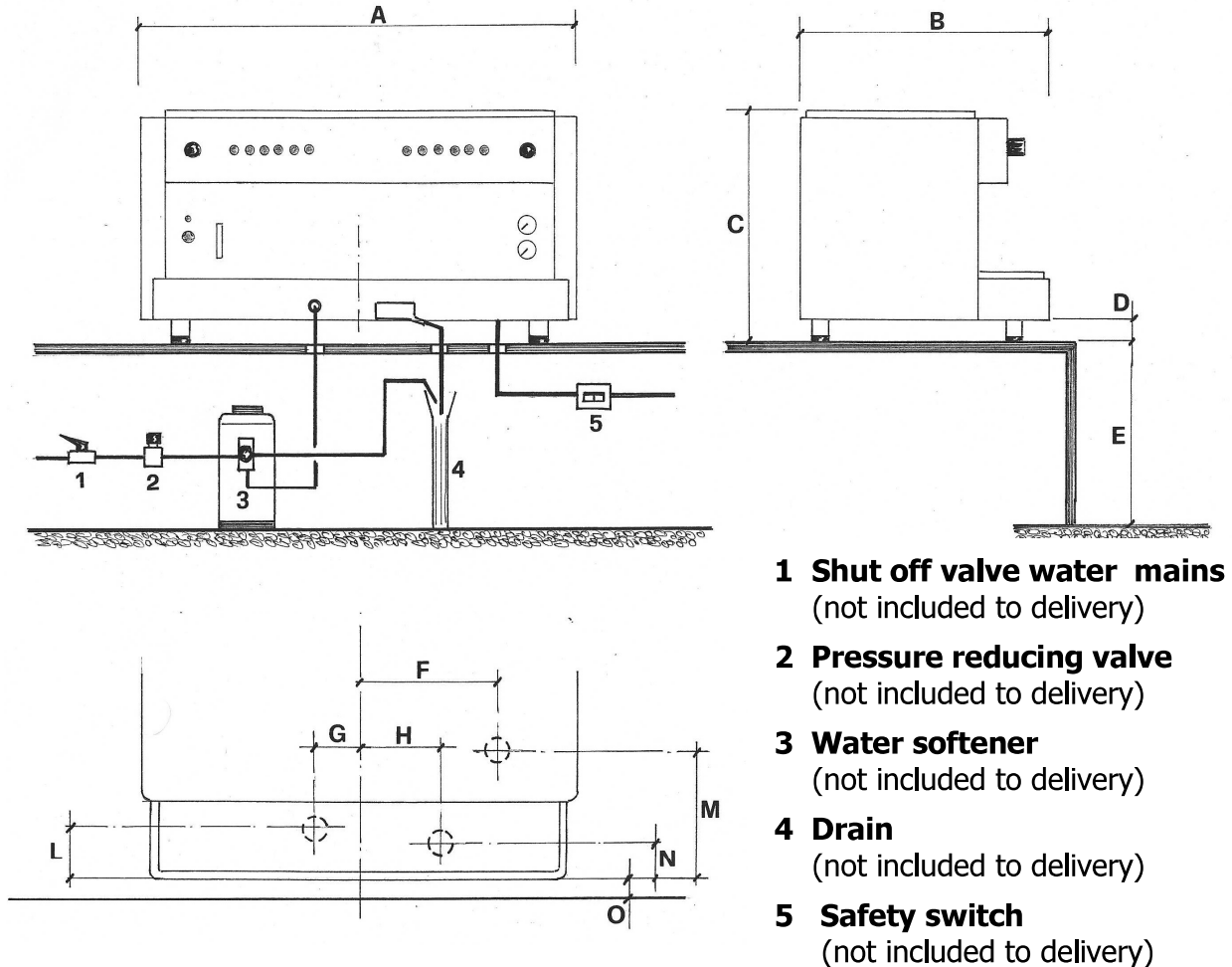


Installation diagram



Pos.	2 group machine		3 group machine	
	mm	in.	mm	in.
A	760	29.9	980	38.6
B	590	23.2	590	23.2
C	536	21.1	536	21.1
D	55	2.17	55	2.17
E	1.025	40.35	1.025	40.35
F	263	10.35	373	14.69
G	50	1.97	160	6.30
H	110	4.33	80	3.15
L	150	5.90	150	5.90
M	290	11.42	290	11.42
N	115	4.53	115	4.53
O	100	3.94	100	3.94